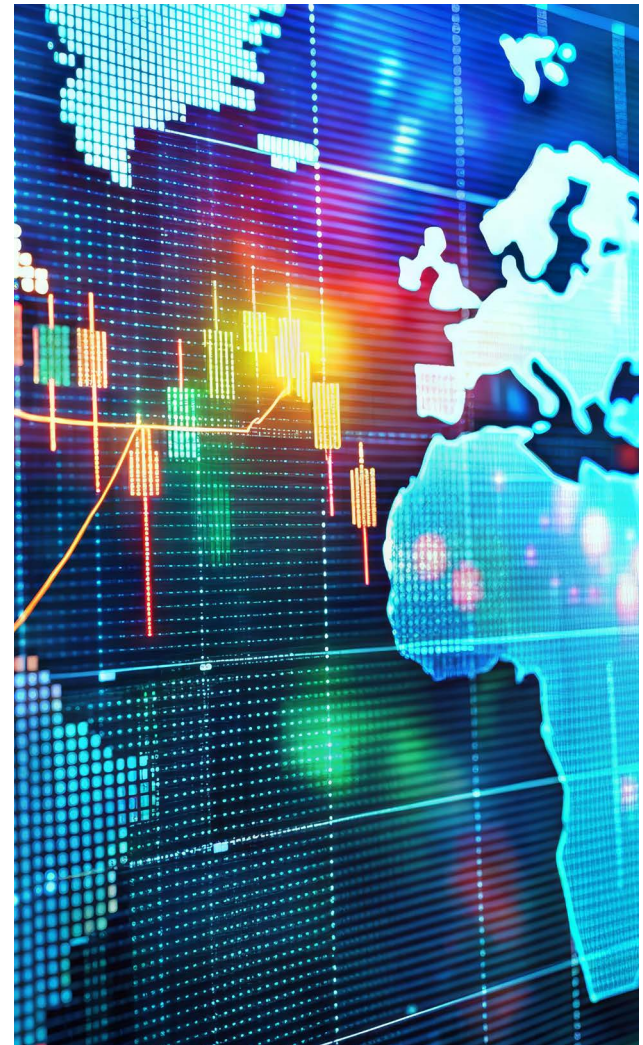


Invitation

Business, Economic & Financial Outlook – June 2026

Introduction event for private Swiss residents
Thursday, 25 June 2026



Business, Economic & Financial Outlook

Zugerberg Finanz presents Business, Economic and Stock Market Outlook on Thursday, June 25, 2026 / 18:00 pm at our Lüssihof in Zug.

Judging by the daily news, one might think that a significant slowdown in global economic growth is to be expected. However, this underestimates the resilience of the various growth hubs. In fact, growth forecasts for the G20 countries have recently been raised slightly. Certainly, the energy price shock caused by the war in Iran is leading to higher inflation rates around the globe.

What can we expect in the coming quarters? What impact will sustainable growth—with its positive momentum—and geopolitical tensions—with their negative repercussions—have on international capital markets? Join us to hear the current factors that impact portfolio and stock decisions.

The program will be led by founder and CEO Timo Dainese. Chief Economist Prof. Dr. Maurice Pedernana will present the outlook for the global economy and the capital markets.

Program:

18:00 – 18:30 pm Get-in and Welcome Drink

18:30 – 19:30 pm Presentations

19:30 – 21:30 pm Light Apéro

Speakers:

Timo Dainese,
Founder and Managing Partner

Prof. Dr. Maurice Pedernana,
Chief Economist and Managing Partner

Tania Mobayed,
Brand Ambassador

Date / Time: Thursday, 25 June 2026 / 18:00 pm
Place: At the Lüssihof, Lüssiweg 47, 6300 Zug
Registration: Online at zugerberg-finanz.ch/event via QR-Code
RSVP: Registration online, limited seating

Online
registration



This is an introduction event for the English-speaking community. It is an opportunity to hear about current topics in investing and appropriate solutions for Swiss domiciled individuals. Zugerberg Finanz is a 26-year-old asset manager, managing over 5 billion CHF portfolios for: private persons, BVG vested pension II holders (portable pension), corporate institutions and family offices, offering affordable entry levels and with active management.